

## School System Redefined!

**Take your School to  
the next level!**

Experience the pinnacle of  
educational advancement and  
innovation with our unparalleled  
suite of offerings."



*Welcome to*  
**SCHOOL+** 

**LEARN+ for Schools**

**CAREER+ for Schools**

**TEACHER+ for Schools**

**School Manager ERP**



**Integrated NEP 2020 +  
Brain Science Learning Approach.**



# About School+

*School+ is a comprehensive school upgrade system designed to transform schools into modern, efficient, effective, and future-ready institutions. IBRI proudly offers India's First NEP 2020 + Brain Science-based Learning Platform, ensuring your school remains at the forefront of educational innovation. Our upgrade system provides top-tier ERP integration, smart learning technologies, mental wellness support, and a pioneering Information Technology curriculum. We invite your school to become a partner in this endeavour.*

## **Benefits of Partnership:**


- *Enhanced operational efficiency with School Manager ERP.*
- *Empowered educators through the Teachers+ platform for professional growth.*
- *Above all, fostering students to become motivated, informed individuals who are assets to their parents, community, and nation. The school would be proud of such talented future leaders.*


*Empowering students and teachers to enhance their memory with School+  
(A Comprehensive School Upgrade System.)*




# India's First **NEP 2020** + **Brain Science Based** **Learning Platform**



 **1500+**  
Videos & Courses

  
**125 K+**  
Happy Students

 Mental Health

 Build The Skills To Drive Your Career.

# LEARN+

Learn+ is a student-centred digital learning platform offering personalised learning paths in key areas such as smart learning, mental health, IT skills, and ProEnglish. Backed by brain science and aligned with NEP 2020, Learn+ incorporates proven techniques to enhance cognitive functions, memory retention, and overall mental well-being. These programmes aim to optimise learning outcomes while promoting creativity and critical thinking.

# CAREER+



## Learning and Career Guidance through Brain Testing

Scientifically designed brain analysis and career counselling solution aimed at helping students discover their true potential. By using a combination of the DITA test, aptitude test, brain mapping, and expert counselling, Career+ provides deep insights into each student's interests, abilities, strengths, weaknesses, and behavioural traits. This personalised approach helps students make informed decisions about their education and career pathways, ensuring a well-rounded growth experience that aligns with NEP 2020 standards. Empower your students with the clarity they need for a successful future.



# Teachers+ for Schools

Teacher training services are designed to cultivate a dynamic, enriched learning environment by equipping educators with advanced pedagogical techniques and strategies. Through our comprehensive training programmes, we empower teachers to implement creative teaching methods, foster critical thinking skills, and promote a holistic approach to education. By integrating mental care and creative skill development into their teaching practices, educators can support students in thriving academically and emotionally, ultimately leading to a more fulfilling and well-rounded educational experience.







# School Manager ERP

A cloud-based system designed to streamline school operations, including admissions, attendance tracking, fee management, and parent-teacher communication. This solution ensures efficient administration by simplifying day-to-day processes, enhancing communication, and optimising resource management for educational institutions.

## Explore Features: **School Manager ERP**



**Student  
Management**



**Academics  
Management**



**Slider  
Management**



**Teacher  
Management**



**Session Year  
Management**



**Holiday  
Management**



**Timetable  
Management**



**Attendance  
Management**



**Exam  
Management**



**Lesson  
Management**



**Assignment  
Management**



**Announcement  
Management**





# IBRI School+: Revolutionizing Education with NEP 2020 and Neuroscience

IBRI School+ transforms education by integrating NEP 2020 guidelines with cutting-edge brain science. Our innovative approach ensures holistic development and prepares students for the future.

# NEP 2020: A New Era in Indian Education



1

## Inclusive Education

NEP 2020 promotes equitable access to quality education for all students across India.

2

## Holistic Approach

The policy emphasises overall development, blending academic knowledge with practical skills and values.

3

## IBRI School+ Alignment

Our curriculum seamlessly integrates NEP 2020 guidelines with advanced brain science methodologies.





# Key NEP 2020 Features in IBRI School+

1

## **5+3+3+4 Academic Structure**

Our curriculum adapts to this new structure, ensuring seamless transitions between all educational stages.

2

## **Foundational Literacy and Numeracy**

We prioritize early learning with specialized programs to build strong educational foundations.

3

## **Multidisciplinary Approach**

IBRI School+ offers a diverse range of subjects, promoting holistic intellectual growth.

4

## **21st-Century Skills Focus**

Our programs develop critical thinking, creativity, and digital literacy for future success.



# Academic Structure and Curriculum Alignment

1

## Foundational Stage (Ages 3-8)

We focus on cognitive development through Pineal Gland Activation and Basic Yoga.

2

## Preparatory Stage (Ages 8-11)

Students build memory skills with Super Memory Techniques and Vedic Mathematics.

3

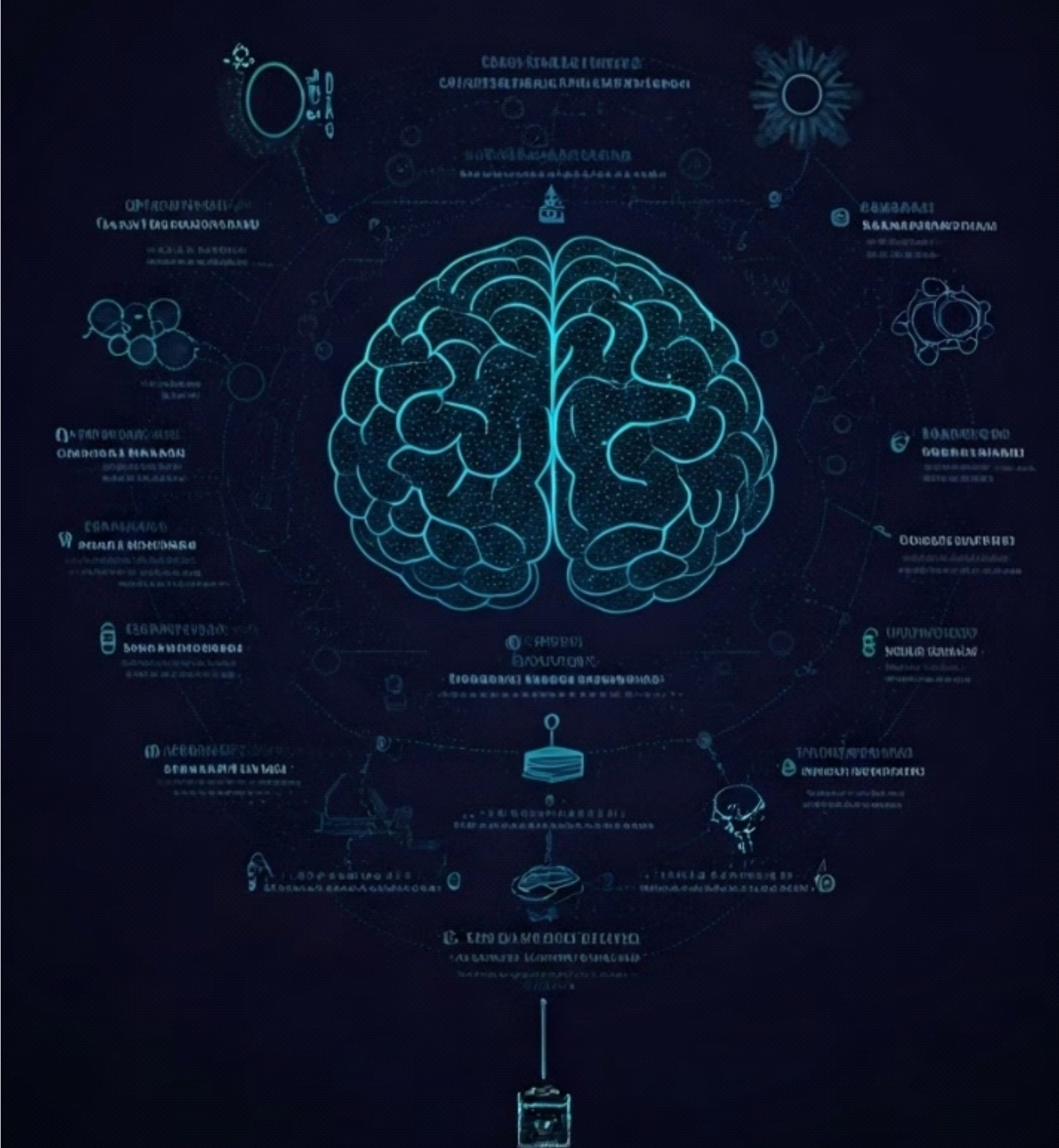
## Middle Stage (Ages 11-14)

We enhance language and digital literacy through ProEnglish and IT courses.

4

## Secondary Stage (Ages 14-18)

Advanced technology skills through AI and Robotics and career readiness are developed.







# Brain Science Integration with Learn+

## Personalised Learning

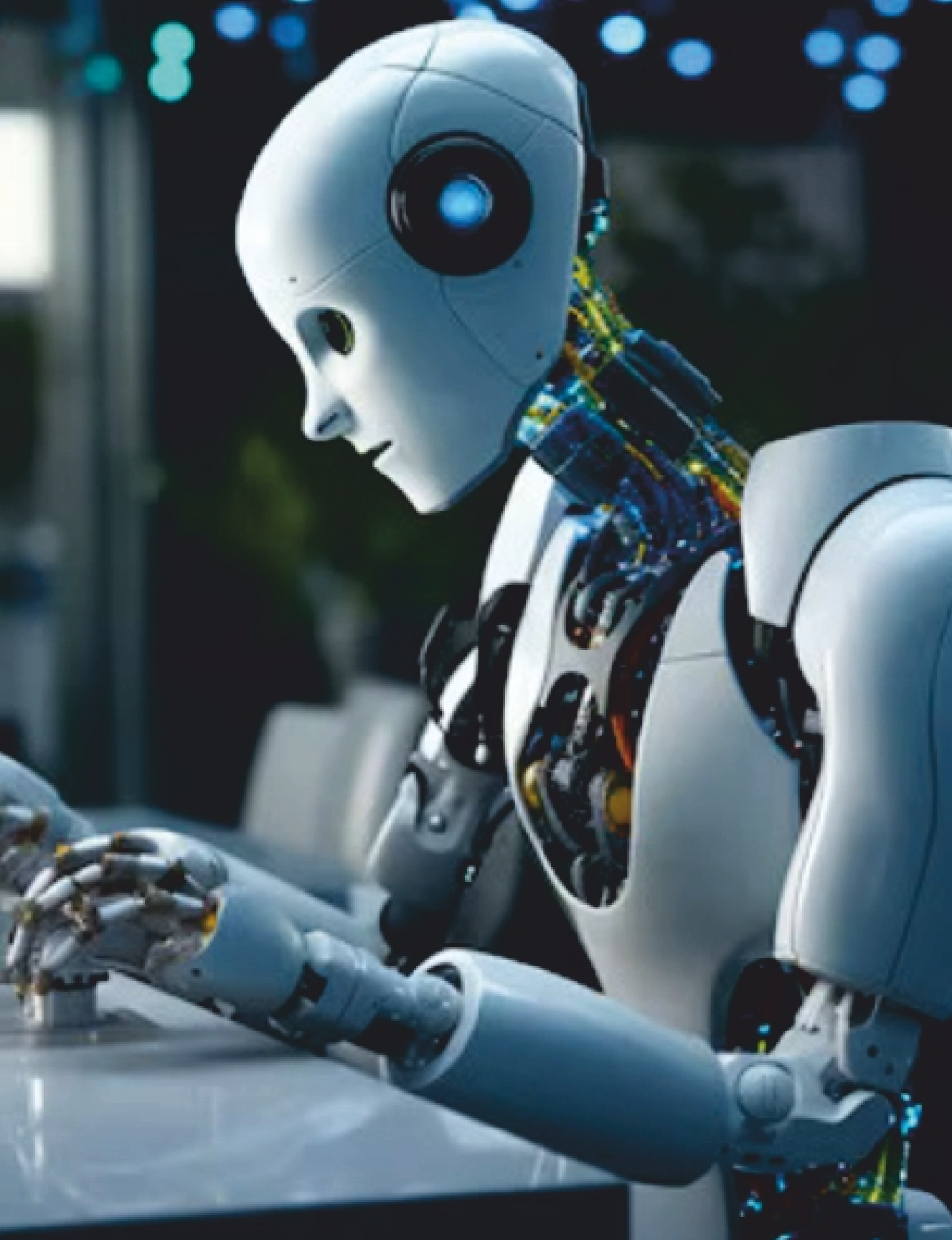
Our adaptive technologies create customized learning paths, ensuring engagement and knowledge retention.

## Cognitive Enhancement

We employ cognitive science techniques that enhance focus, retention, and overall mental acuity.

## Brain-Science Methods

Our curriculum integrates the latest findings in brain science. This ensures an optimized learning experience for all students.



# Holistic and Experiential Pedagogy

## **Mental Health**

The complete brain development through Super Memory Power, Vedic Maths, and Pineal Gland Activation.

## **IT & Software**

Artificial Intelligence, Robotics, Web Development, Graphic Designing, and Digital Marketing.

## **Medical Yoga**

Regular yoga sessions promote mental clarity, physical well being, and emotional balance.

## **Smart Learning**

Comprehensive animated video lessons in science and math for school students (available in English and Hindi), as well as ProEnglish Lab for English proficiency.



# Comprehensive Assessment Framework

1

## Continuous Evaluation

Regular formative assessments track student progress throughout the academic year.

2

## Skill-Based Assessment

We evaluate both academic and non-academic skills to provide a holistic view.

3

## Holistic Report Cards

Our reports reflect academic performance, creativity, collaboration, and emotional intelligence.







# Teacher Empowerment with Teachers+

1

## Professional Development

Regular training programs keep teachers updated on the latest educational methodologies.

2

## Digital Resource Hub

Teachers access a vast library of digital resources to enhance their lessons.

3

## Neuroscience Training

Educators learn how to apply brain science principles effectively in their teaching practices



# Career Guidance with Career+

## Career Counseling

Tailored assessments to match student strengths with career paths

## Skill Development

Training in career-focused skills and exam preparation strategies

## Industry Exposure

Workshops and internships to provide real-world experience

## Future Readiness

Guidance on emerging careers and required skillsets







# Inclusive and Multidimensional Education Support

Preparatory Classes:

Smooth transitions across educational stages

Enrichment Programs:

Special initiatives for gifted students

Inclusive Support:

Comprehensive assistance for all learners





# School+ Implementation

Utilizes interactive, brain science-based techniques for effective learning.  
technology-driven content for holistic development across all age groups.

1

## Duration & Schedule:

**Duration:** 40 minutes daily, 180-200 hours over 12 months.

**Schedule:** Consistent integration into the daily timetable.

2

## Key Focus:

Interactive Learning using technology.

Brain Science-Based Methods for effective learning.

3

## Goal:

A cohesive, age-specific, enjoyable learning journey.



# Experience the Future of Learning with Brain Science.

Fast Memorising ☕ Long Retention ★ Quick Recollection

## Skill Certification

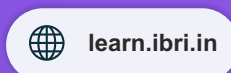


Advanced Brain & Skill Development Programmes  
Skill Certification from NSDC, MSME, and IBRI.





Progressive Web App - Access courses on any device like a mobile, tablet, desktop, TV. and more.



# Learn on the go on any of your devices.



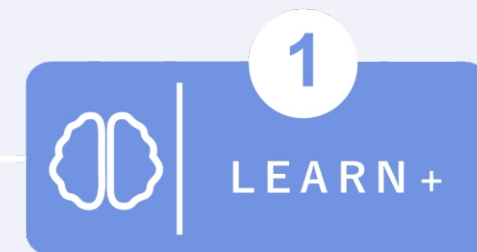




*Thank You*

## Join the IBRI School+ Movement Today!

IBRI School+ is dedicated to transforming education in India by integrating NEP 2020, neuroscience, and modern pedagogy to ensure each student's holistic development. Together, we can create a nurturing, stimulating environment where every student thrives.



Contact Info



[www.ibri.in](http://www.ibri.in)



@ibriedtech



+91 7087077775